

**ASSEMBLY/REPAIR  
PARTS MANUAL  
MODEL NO. RE145H42A  
Lawn Tractor**

For Parts and Service, contact our authorized distributor: call 1-800-849-1297  
For Technical Assistance: call 1-800-829-5886

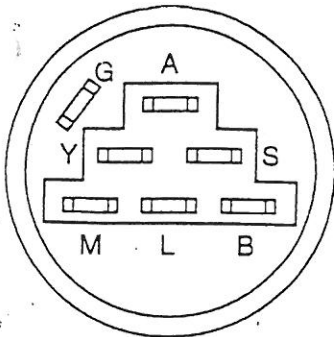
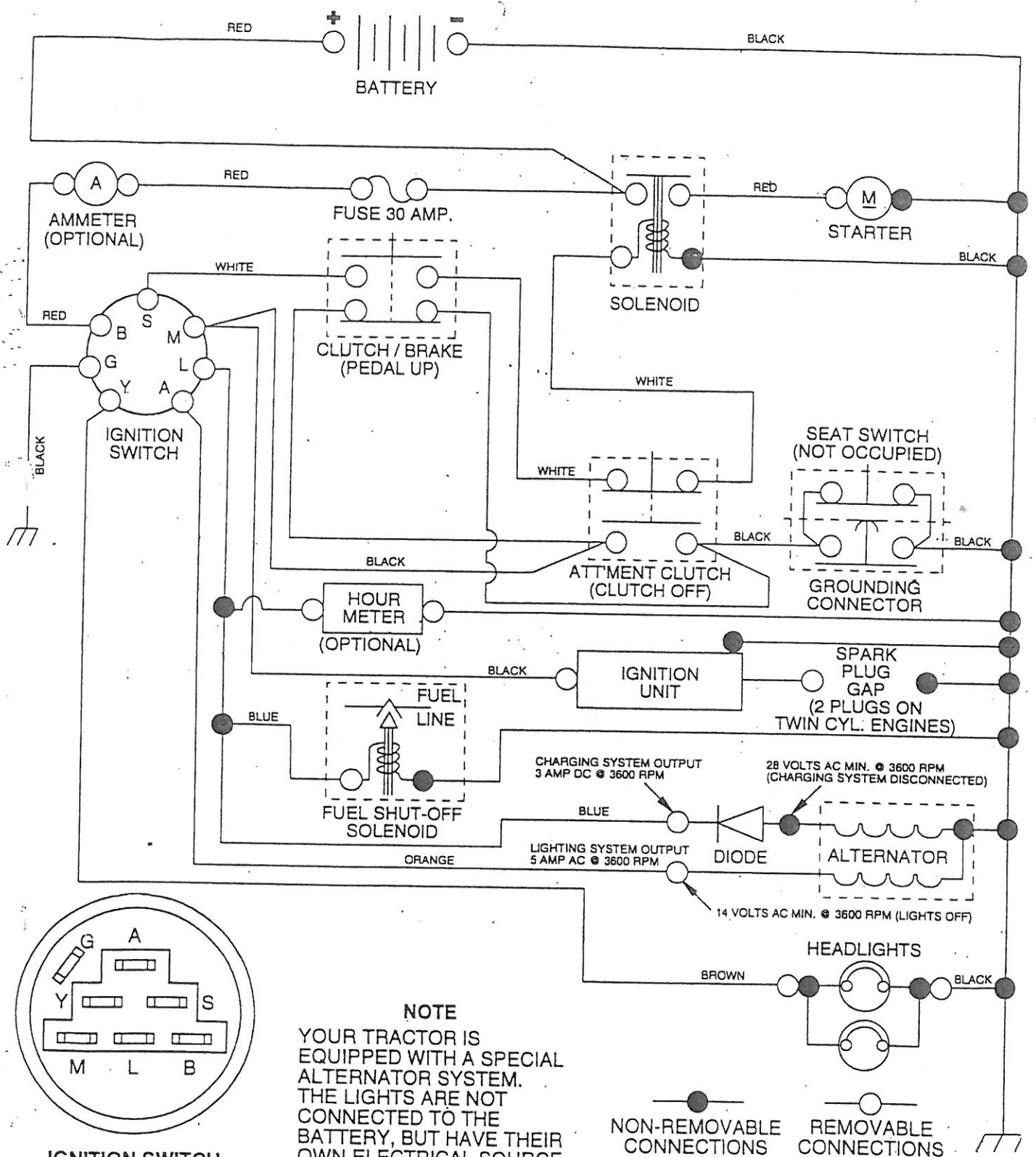
---

**Rally**

157793 11.26.96 KFSW  
PRINTED IN U.S.A.

# TRACTOR -- MODEL NUMBER RE145H42A

## SCHEMATIC



**IGNITION SWITCH**

POSITION	CIRCUIT	"MAKE"
OFF	G + M + L	NONE
RUN/LIGHT	B + L	A + Y
RUN	B + L	NONE
START	B + L + S	NONE

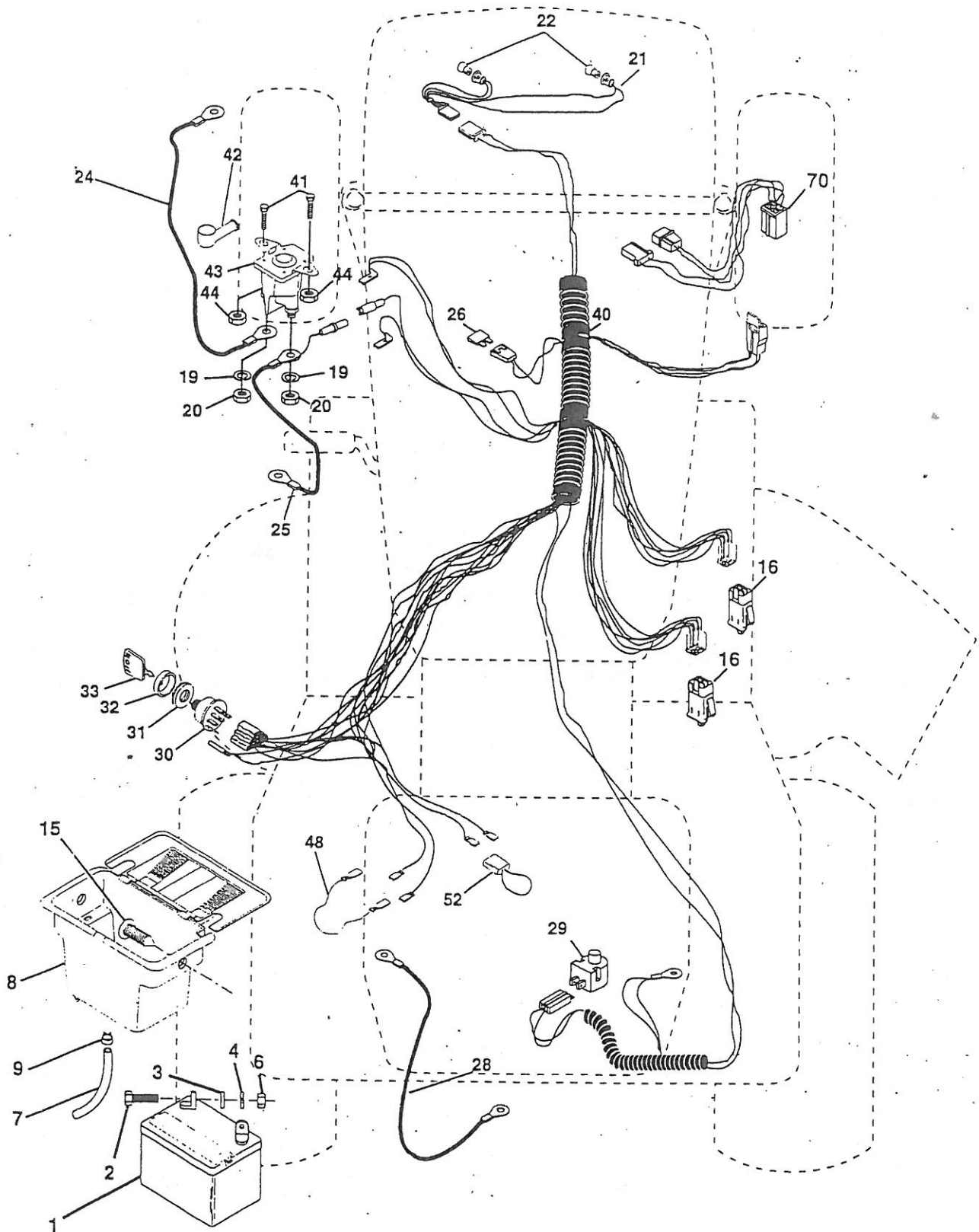
**NOTE**  
 YOUR TRACTOR IS EQUIPPED WITH A SPECIAL ALTERNATOR SYSTEM. THE LIGHTS ARE NOT CONNECTED TO THE BATTERY, BUT HAVE THEIR OWN ELECTRICAL SOURCE. BECAUSE OF THIS, THE BRIGHTNESS OF THE LIGHTS WILL CHANGE WITH ENGINE SPEED. AT IDLE THE LIGHTS WILL DIM. AS THE ENGINE IS SPEEDED UP, THE LIGHTS WILL BECOME THEIR BRIGHTEST.



**WIRING INSULATED CLIPS**  
**NOTE:** IF WIRING INSULATED CLIPS WERE REMOVED FOR SERVICING OF UNIT, THEY SHOULD BE REPLACED TO PROPERLY SECURE YOUR WIRING.

TRACTOR -- MODEL NUMBER RE145H42A

ELECTRICAL



# REPAIR PARTS

## TRACTOR - - MODEL NUMBER RE145H42A

### ELECTRICAL

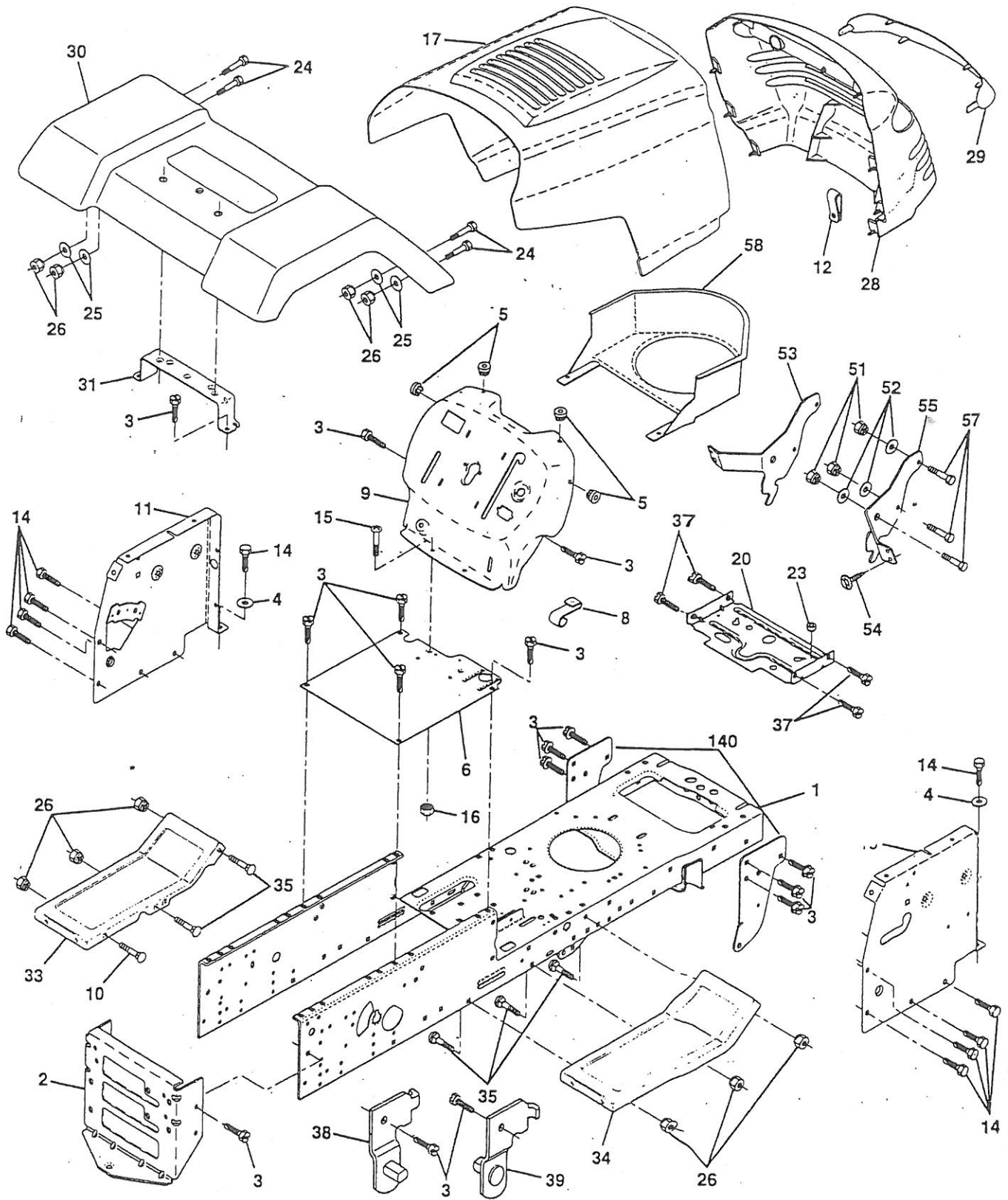
KEY NO.	PART NO.	DESCRIPTION
1	144925	Battery 12 Volt 25 Amp
2	74760412	Bolt Hex Hd 1/4-20unc X 3/4
3	19091016	Washer 9/32 X 5/8 X 16 Ga
4	10040400	Washer Lock Hvy Helical 1/4
6	73220400	Nut Fin Hex 1/4-20 Unc
7	109238X	Tube Plastic 12"
8	156417	Case Battery
9	109596X	Clamp Hose Olive
15	147688	Fastener Snap-In
16	153664	Switch Interlock Push-In
19	10090400	Washer Lock 1/4
20	73350400	Nut Jam Hex 1/4-20 Unc
21	136850	Harness Asm Light W/4152J
22	4152J	Bulb Light #1156
24	4799J	Cable Battery 6 Ga 11"red
25	146147	Cable Battery 6 Ga w/16 wire,red
26	108824X	Fuse 30 AMP Auto Green
28	4207J	Cable Ground 6 Ga 12" black
29	121305	Switch Plunger Nc Gray
30	140301	Switch Ign 3
31	124211X	Nut Ignition
32	141226	Cover Sw Ignition
33	122147X	Key Ign Molded Generic
40	156442	Harness Ign
41	71110408	Bolt Blk Fin Hex 1/4-20unc X 1/2
42	131563	Cover Terminal Red
43	145673	Solenoid
44	73640400	Nut Keps Blk Hex 1/4-20 unc
48	140844	Adapter Ammeter Rectangular
52	141940	Protection Wire Loop (Hourmeter)
70	140422	Harness Eng

NOTE: All component dimensions give in U.S. inches  
1 inch = 25.4 mm.

# REPAIR PARTS

## TRACTOR - - MODEL NUMBER R145H42A

### CHASSIS AND ENCLOSURES



# REPAIR PARTS

## TRACTOR - - MODEL NUMBER RE145H42A

### CHASSIS AND ENCLOSURES

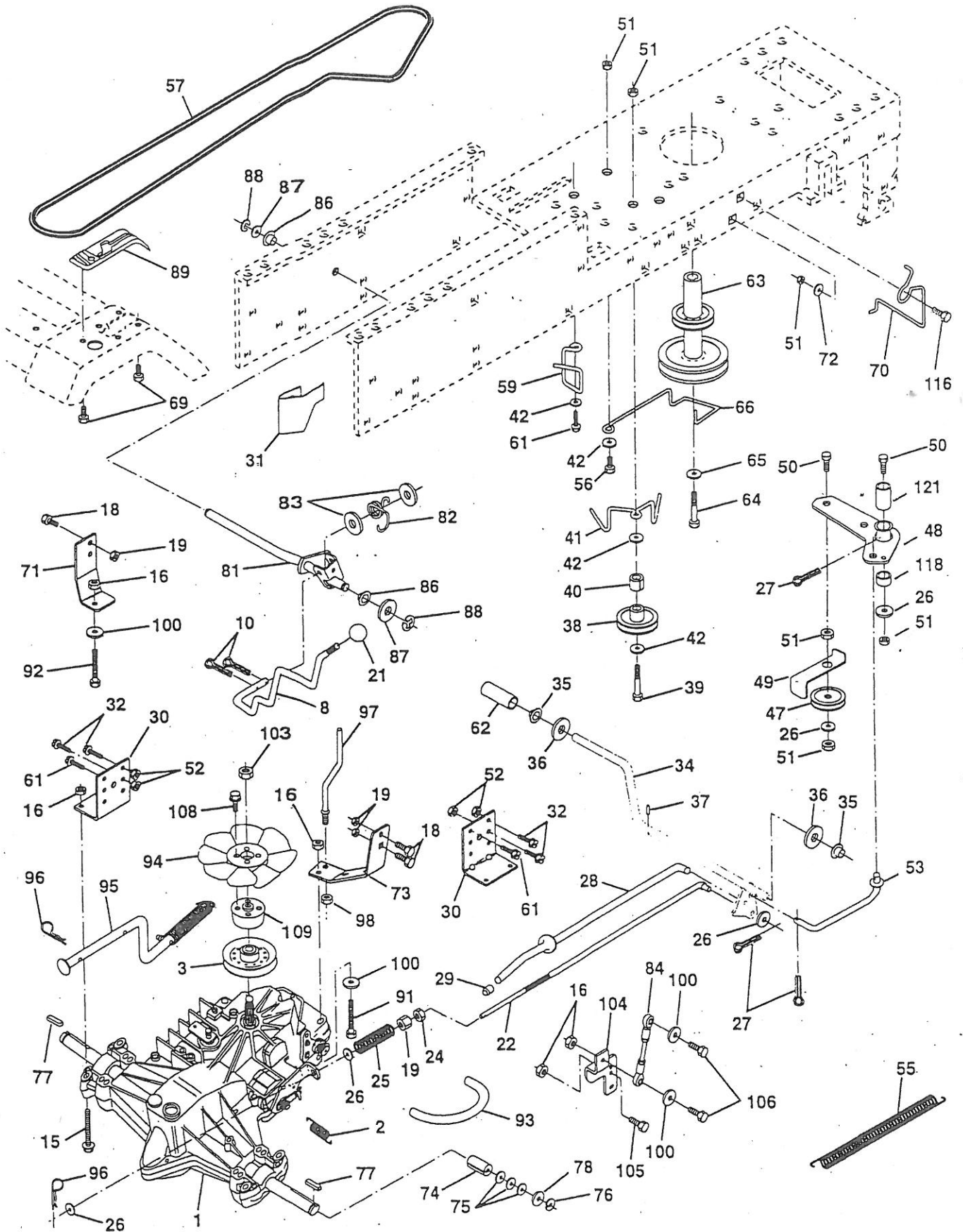
KEY NO.	PART NO.	DESCRIPTION
1	155051	Chassis Weldment 11 Ga.
2	140356	Drawbar, Stretch 94
3	17490612	Screw, Thdrol. 3/8-16 x 3/4 Ty-TT
4	19131216	Washer 13/32 x 3/4 x 16 Gauge
5	155272	Bumper Hood/Dash
6	155923	Saddle LT Fender Shift
8	126471X	Clip Retainer Slide-On
9	147627X011	Dash P/L
10	72140608	Bolt, Rdhd Sqnk 3/8-16 x 1
11	155027	Panel Asm. Dash LH
12	145660	Clip Tinnerman Grille P/L
13	155934X010	Dash, Panel RH
14	17490608	Screw Thdrol 3/8-16 x 1/2 Ty-tt
15	74180512	Screw Mach.Trhd 5/16-18 UNC x 3/4
16	73510500	Nut Keps 5/16-18 UNC
17	139394X505	Hood Pnt Stl PL
20	156437	Plate Mtg. Battery Fuel Tank
23	124028X	Bushing Snap Nyl Blk Fuel Line
24	74780616	Bolt, Hex , Fin. 3/8-16UNC x 1 Gr. 5
25	19131312	Washer 13/32 x 13/16 x12 Gauge
26	73800600	Nut Lock Hex w/lns. 3/8-16 Unc
28	157373	Grille
29	140273	Lens Grille
30	140001X505	Fender Pnt
31	136619	Bracket Fender
33	105476X505	Footrest Pnt., LH
34	105475X505	Footrest Pnt., RH
35	72110606	Bolt Rdhd Sht. Sqnk 3/8-16 X 3/4
37	17490508	Screw Thdrol 5/16-18 x 1/2 Tyt.
38	139886	Bracket Asm. Pvt. LH Mower Rear
39	139887	Bracket Asm. Pvt. RH Mower Rear
51	73800400	Nut Lock Hex W/lns 1/4-20
52	19091416	Washer 9/32 x 7/8 x 16 Ga.
53	144697	Bracket, Grille LH
54	17030814	Screw Lock Spider #8 x 7/8
55	144696	Bracket Grille RH
57	74780412	Bolt Fin Hex 1/4-20 x 3/4
58	150127	Air Duct Engine P/L
140	158418	Bracket Suspension Front
--	5479J	Plug Btn Blk .359 Dia Ch/Inf

NOTE: All component dimensions given in U.S. inches  
1 inch = 25.4 mm

# REPAIR PARTS

## TRACTOR -- MODEL NUMBER RE145H42A

### DRIVE



# REPAIR PARTS

## TRACTOR - - MODEL NUMBER RE145H42A

### DRIVE

KEY NO.	PART NO.	DESCRIPTION
1	140607	Transmission, Asm.
2	142431	Spring, Return, Brake
3	144698	Pulley, Transmission
8	141003	Rod, Shift
10	76020416	Pin, Cotter 1/8 x 1
15	74490544	Bolt Hex Flghd 5/16-18 Gr. 5
16	73800500	Nut, Lock Hex w/lins 5/16-18 UNC
18	74780616	Bolt Hex 3/8-16 UNC x 1 Gr.5
19	73800600	Nut, Lock Hex w/Wsh 3/8-16 UNC
21	106933X	Knob Rd. 1/2-13 Plstc. Thds. Blk.
22	145627	Rod, Brake
24	73350600	Nut
25	106888X	Spring, Rod, Brake
26	19131316	Washer 13/32 x 13/16 x 16 Ga.
27	76020412	Pin, Cotter 1/8 x 3/4
28	145204	Rod, Parking Brake
29	71673	Cap, Parking Brake
	130807	Bracket, Transmission
	127275X	Keeper, Belt LH
32	74760512	Bolt Hex 5/16-18 UNC x 3/4
34	155071	Shaft, Foot Pedal
35	120183X	Bearing, Nylon
36	19211616	Washer
37	1572H	Pin, Roll
38	123674X	Pulley, Idler, Flat
39	74760644	Bolt
40	4470J	Spacer, Split
41	154777	Keeper, Belt, Idler
42	19131312	Washer 13/32 x 13/16 x 12 Ga.
47	127783	Pulley, Idler, V-Belt
48	154604	Asm, Bell Crank
49	123205X	Retainer, Belt
50	74760624	Bolt
51	73680600	Nut
52	73680500	Nut Crownlock 5/16-28
53	105710X	Link, Clutch
55	105709X	Spring, Return, Clutch
56	74760620	Bolt, Hex 3/8-16 UNC x 1-1/4
57	141416	V-Belt, Drive
58	140312	Keeper, Belt, Center
	17490612	Screw, Thdrol 3/8-16 x 3/4 Type TT
	8883R	Cover, Pedal
63	140186	Pulley, Engine

KEY NO.	PART NO.	DESCRIPTION
64	71170764	Bolt Hex 7/16 x 4 Gr. 5
65	10040700	Washer
66	154778	Keeper, Belt Engine Flproof
69	142432	Screw
70	134683	Guide, Belt, Mower Drive RH
71	141417	Strap, Torque, Lh
72	19132012	Washer 13/32 x 1-1/4 x 12 Ga.
73	141418	Strap, Torque, Rh
74	121199X	Spacer, Split
75	121749X	Washer 25/32 x 1-1/4 x 16 Ga.
76	12000001	Ring, E
77	123583X	Key, Square
78	121748X	Washer 25/32 x 1-5/8 x 16 Ga.
81	141420	Asm, Shaft
82	123782X	Spring, Torsion
83	19171216	Washer 17/32 x 3/4 x 16 Ga.
84	141423	Rod, Tie
86	71208	Bushing, Steering Rod
87	19212016	Washer 21/32 x 1-1/4 x 16 Ga.
88	12000008	Ring, Clip
89	151147	Console, Shift
91	74780536	Bolt Hex 5/16-18 x 2-1/4
92	74780524	Bolt Hex 5/16-18 UNC-x 1-1/2
93	142564	Line Fuel
94	140462	Fan 7"
95	144643	Control Asm Bypass Hydro
96	4497H	Spring, Retainer 1"
97	144201	Keeper, Belt Rh
98	73510600	Nut Keps 3/8-16 UNC
100	19111216	Washer 11/32 x 3/4 x 16 Ga.
103	73940800	Nut, Hex Jam Toplock 1/2-20 UNF
104	141421	Arm, Control Pump 500 Hydro
105	71070516	Bolt, Head Hex 5/16 x 18 x 1
106	74780520	Bolt H 5/16-18 UNC x 1-1/4
108	17541026	Screw Hex Wh Hd #10-24 x 1-5/8
109	145098	Adaptor Fan Hydro Lt Hyd Alum
116	72110610	Bolt Rdhd Sq Neck 3/8-16 x 1-1/4
118	154774	Spacer Bellcrank
121	154419	Nyliner Clutching Stl

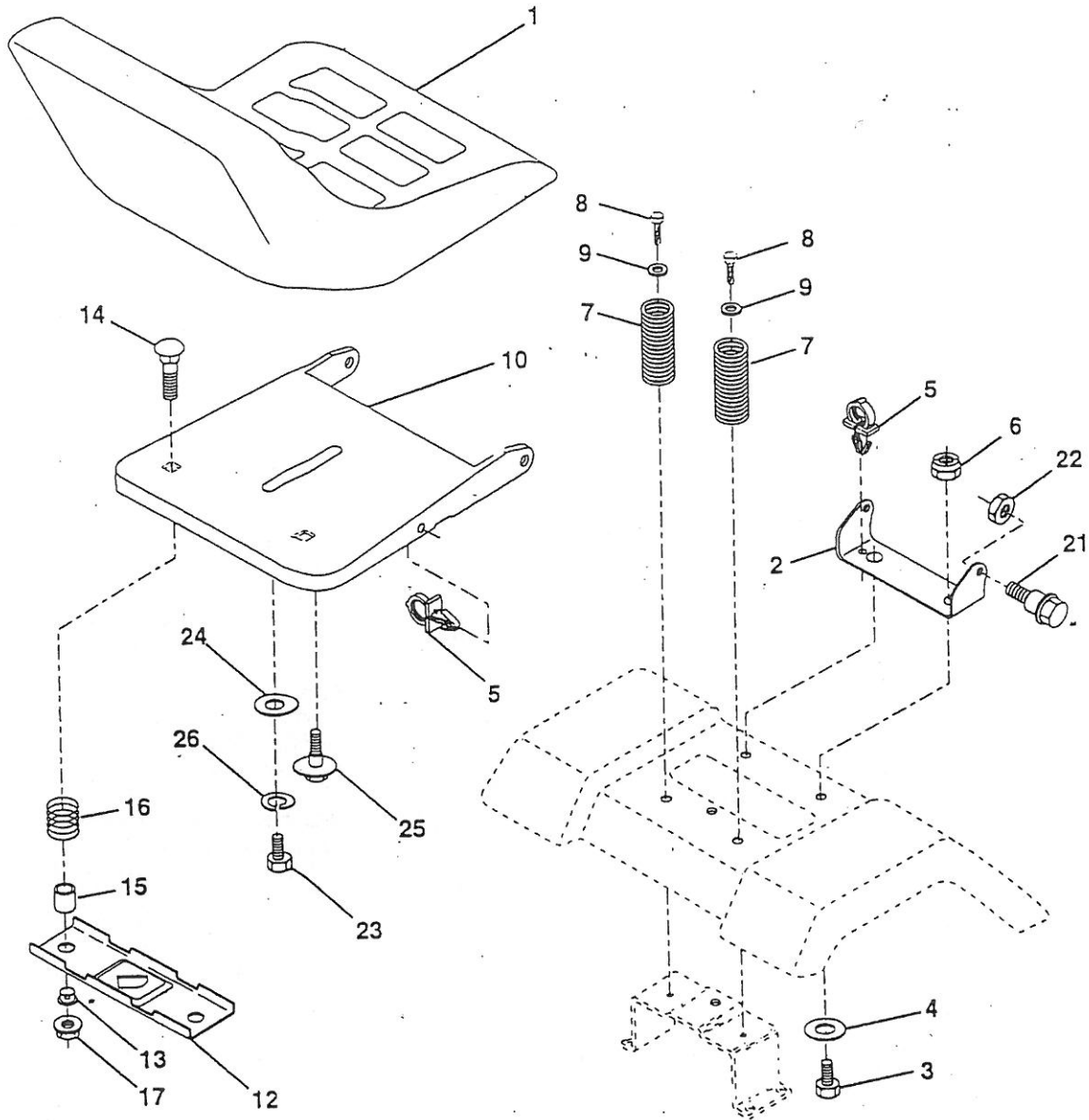
NOTE: All component dimensions given in U.S. inches  
1 inch = 25.4 mm



# REPAIR PARTS

## TRACTOR - - MODEL NUMBER RE145H42A

### SEAT



KEY NO.	PART NO.	DESCRIPTION
1	127427	Seat
2	140551	Bracket, Pivot, Seat
3	74760616	Bolt
4	19131610	Washer 13/32 x 1 x 10 Ga.
5	145006	Clip, Push-in
6	73800600	Nut
7	124181X	Spring, Seat
8	17490616	Screw, Thdrol 3/8-16 x 1
9	19131614	Washer 13/32 x 1 x 14 Ga.
10	155925	Pan, Seat
12	121246X	Bracket, Mounting, Switch, Seat
13	121248X	Bushing, Nylon

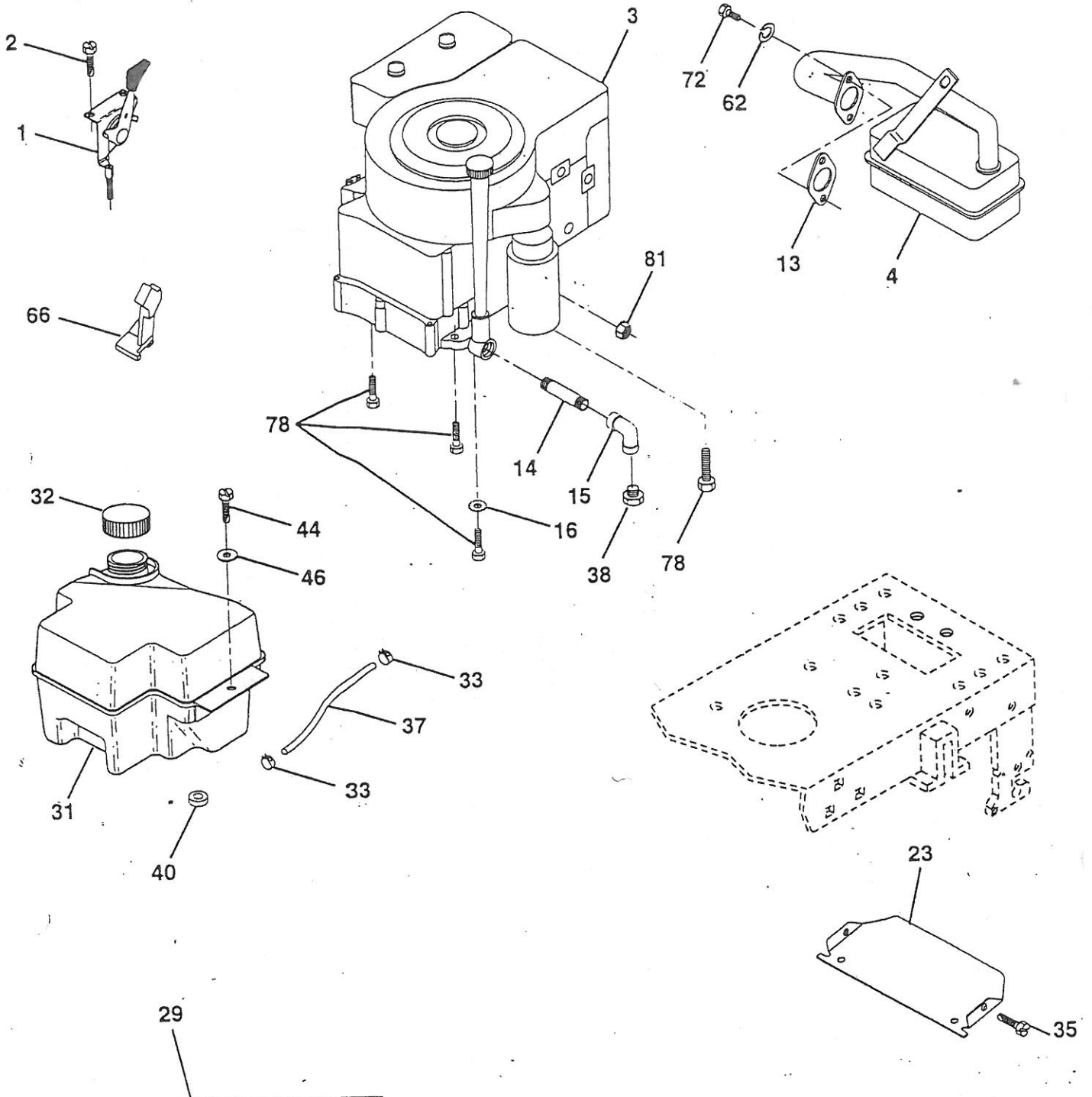
KEY NO.	PART NO.	DESCRIPTION
14	72050411	Nut, Crownlock 1/4-20 x 1-3/8
15	134300	Spacer, Split
16	121250X	Spring
17	123976X	Nut, Lock, Flange 1/4 Gr. 5
21	153236	Bolt, Shoulder 5/16-18 UNC
22	73800500	Nut
23	74780814	Bolt Fin Hex 1/2 - 13 x 7/8 Gr. 5
24	19171912	Washer 17/32 x 1-3/16 x 12 Ga.
25	127018X	Bolt Shoulder 5/16-18 x .62
26	10040800	Washer Lock Hvy Hclc Spr 1/2

NOTE: All component dimensions given in U.S. inches  
1 inch = 25.4 mm

# REPAIR PARTS

TRACTOR -- MODEL NUMBER RE145H42A

## ENGINE



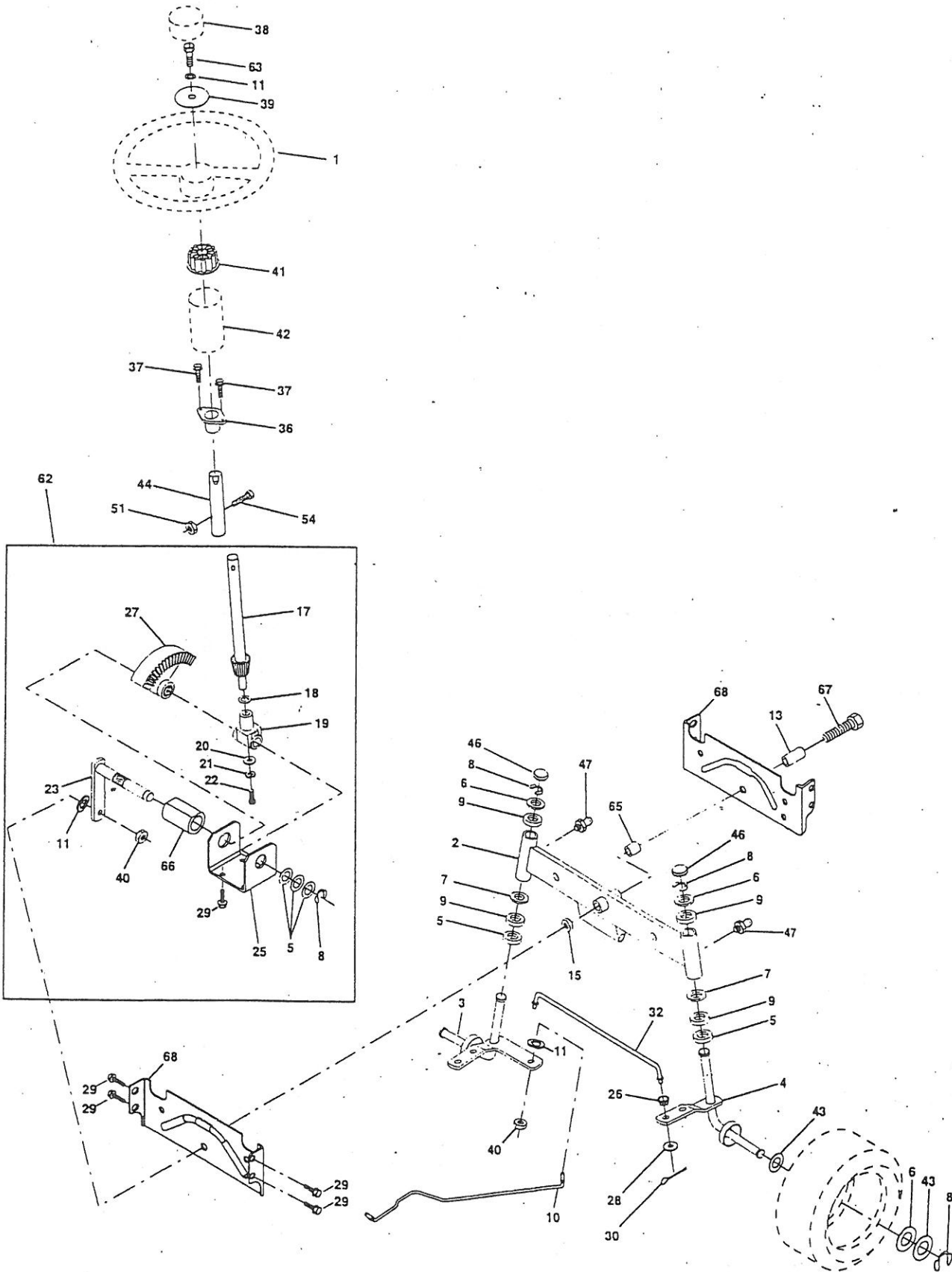
29

**OPTIONAL EQUIPMENT**  
**Spark Arrester**

# REPAIR PARTS

TRACTOR - - MODEL NUMBER RE145H42A

## STEERING WHEEL



# REPAIR PARTS

## TRACTOR -- MODEL NUMBER RE145H42A

### STEERING WHEEL

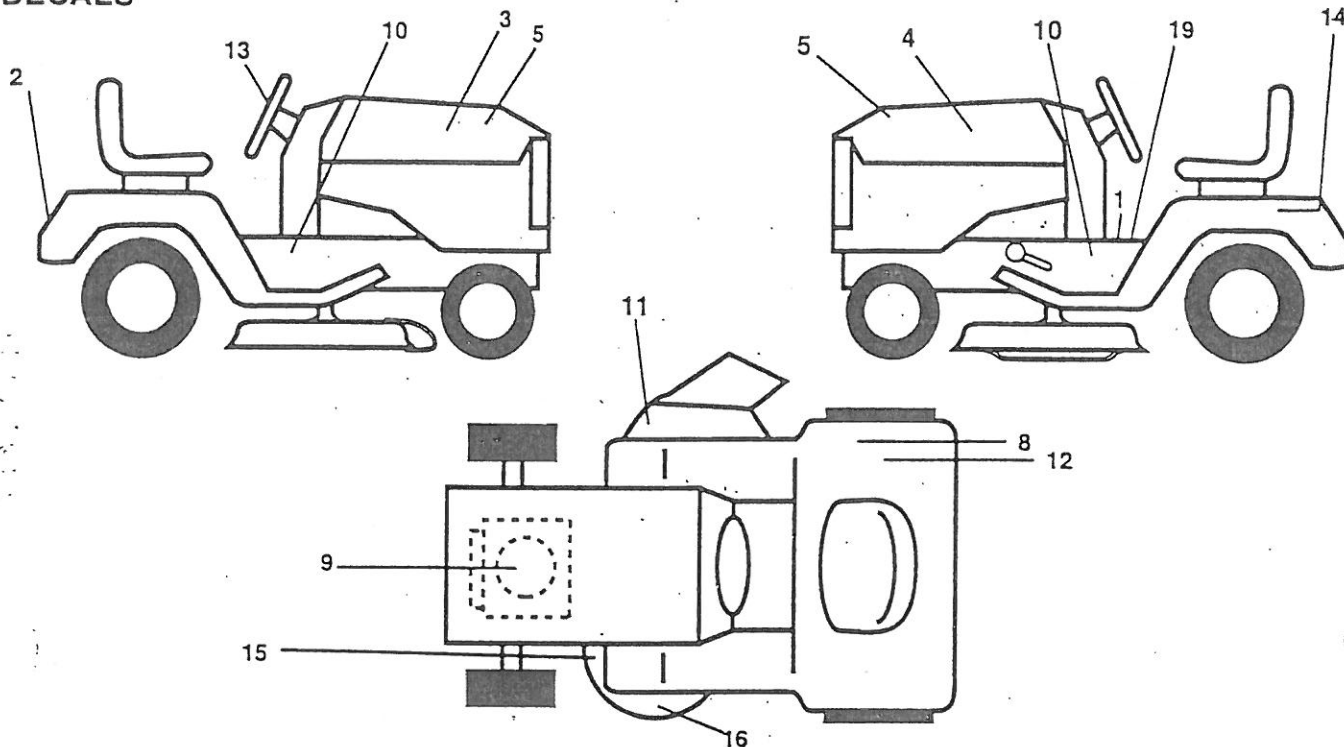
KEY NO.	PART NO.	DESCRIPTION
1	133741	Wheel Steering
2	154427	Axle Asm Front
3	154422	Spindle Asm LH
4	154423	Spindle Asm RH
5	6266H	Bearing, Race, Thrust Hardened
6	121748X	Washer 25/32 X 1-5/8 X 16 Ga
7	19272016	Washer 27/32 X 1-1/4 X 16 Ga
8	12000029	Ring Klip
9	3366R	Bearing
10	156438	Link Drag
11	10040600	Washer Lock Hvy Hlcl Spr 3/8
13	154779	Bearing Axle Stl/Gt
15	73901000	Locknut, Hex, Jam, w/Washer Insert 5/8-11 Unc
17	156546	Steering, Assembly Shaft
18	57079	Washer Thrust 515x 750x 033
19	124035X	Support Shaft
20	126684X	Washer Shim 1/4 X 5/8 X .062
21	10040400	Washer Lock Hvy Helical 1/4
22	71100410	Screw Cap Sckt Hd Phos & Oil
23	127501	Shaft Asm Pittman
25	154406	Bracket Steering
26	126847X	Bushing Link Drag Blk Lr
27	136874	Gear Sector
28	19131416	Washer 13/32 x 7/8 x 16 Ga.
29	17490612	Screw Thdrol. 3/8-16x3/4 Ty-tt
30	76020412	Pin Cotter 1/8 x 3/4 CAD
32	130465	Rod Connecting
36	155099	Bushing Steering
37	152927	Screw TT #10-32 X 5 x 3/8 Flange
38	133742	Cap Wheel Steering
39	19133808	Washer 13/32 x 2-3/8 x 8 Ga
40	7810H	Nut Lock Center 3/8-24 Unf.
41	100711L	Adapter Wheel Strg
42	154054	Boot Shaft Steering
43	121749X	Washer 25/32 X 1 1/4 X 16 Ga
44	153720	Extension Steering
46	121232X	Cap Spindle
47	6855M	Fitting Grease
51	73800500	Nut Lock Hex W/Ins. 5/16-18 Unc P
54	74780520	Bolt Fin Hex 5/16-18 Unc 6 x 1-1/4
63	74780616	Bolt Fin Hex 3/8-16unc x 1 Gr. 5
65	154780	Spacer Axle
66	154404	Bearing Arm Pittman
67	74781044	Bolt Fin Hex 5/8-11 UNC x 2-3/4
68	154429	Brsce Axle

NOTE: All component dimensions given in U.S. inches  
1 inch = 25.4 mm

# REPAIR PARTS

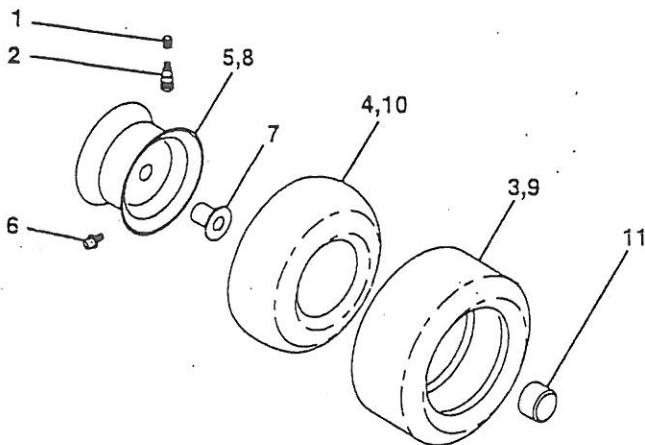
## TRACTOR -- MODEL NUMBER RE145H42A

### DECALS



KEY NO.	PART NO.	DESCRIPTION	KEY NO.	PART NO.	DESCRIPTION
1	145498	Decal, Instruction, Operation	19	140837	Decal, Parking Brake
2	132628	Decal, Fender Logo	--	138311	Decal, Handle, Lift, Height Adjust (Lift Handle)
3	153266	Decal, Hood Rh	--	142341	Decal, Drawbar Cntrl. Mvt. Hyd. LT
4	153267	Decal, Hood Lh	--	157274	Manual, Operator's (E/F)
5	146644	Decal, HP Hood	--	157793	Manual, Repair Parts (E/F)
8	145437	Decal, Europe Stand CE	Accessories not included with your tractor:		
9	272991	Decal, HP Engine	--	LBD48	48" Snow Blade
10	141801	Decal Chassis 42" Hydro	--	LSB42	42" Snow Blower
11	145494	Decal, Mower Cutfinger Symbol	--	C42	Grass Catcher
12	125690X	Decal 100 DBA	--	LC05	33# Wheel Wts., Pair
13	127075	Decal, Wheel Steering	--	LA018	Tire Chains
14	145005	Decal, Btry Dngr/Psn P/L Sym	--	MK420	Mulching Kit
15	136832	Decal, V-Belt			
16	135013	Decal, Enviro, Deck, Yellow			

### TIRES AND WHEELS



KEY NO.	PART NO.	DESCRIPTION
1	59192	Cap, Valve
2	65139	Stem, Valve
3	106222X	Tire Front
4	59904	Tube, Front (not furnished)
5	106732X427	Rim, Asm. Front
6	278H	Grease Fitting (rear tire only)
7	9040H	Bearing, Flange (front tire only)
8	106108X427	Rim, Asm. Rear
9	106268X	Tire, Rear TS. 18 x 9.5 - 9 C. Service
10	7152J	Tube, Rear (not furnished)
11	104757X	Cap, Axle
--	144334	Sealant, Tire (10 oz. Tube)

NOTE: All component dimensions given in U.S. inches  
1 inch = 25.4 mm

# REPAIR PARTS

TRACTOR -- MODEL NUMBER RE145H42A

## ENGINE

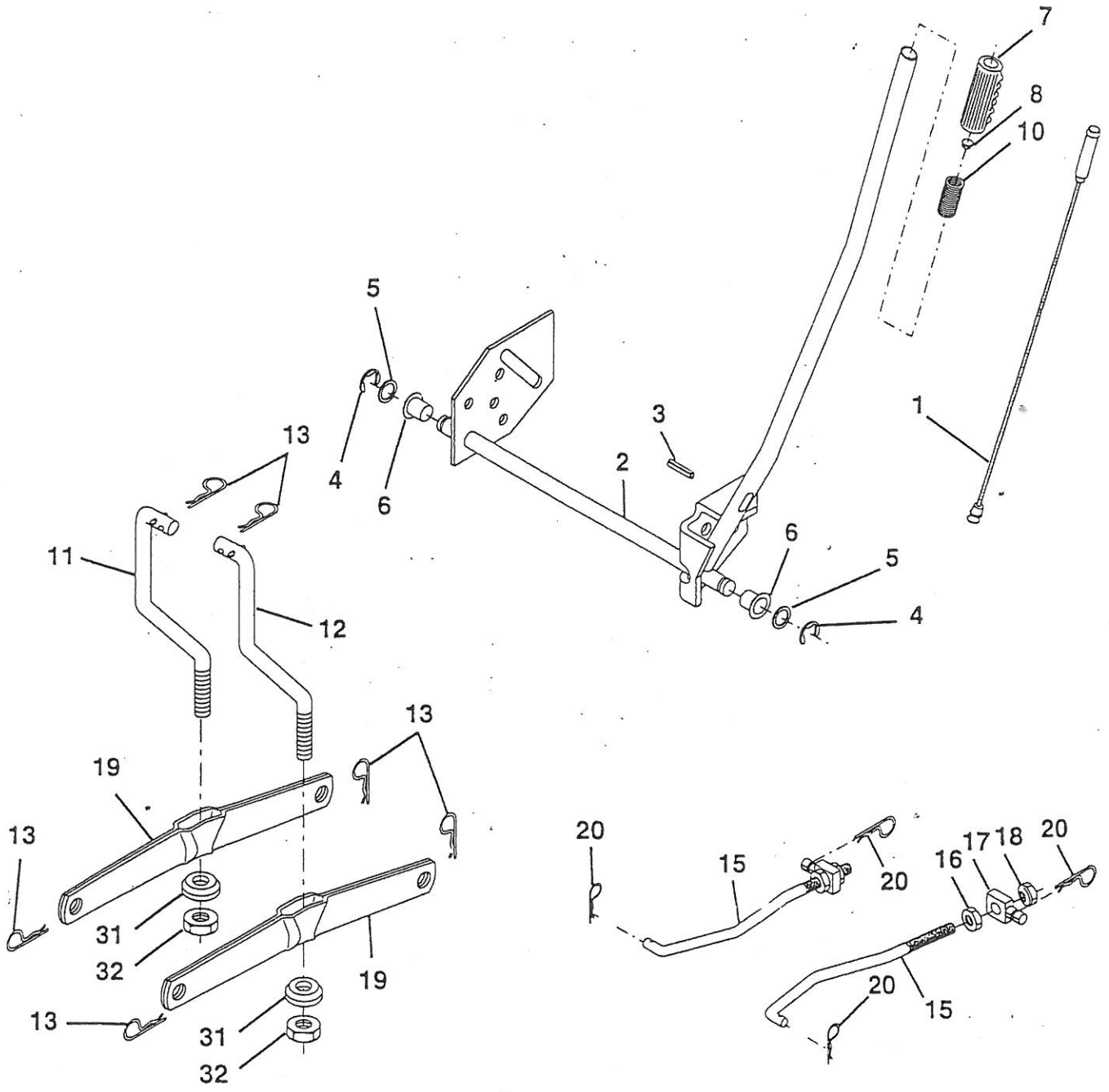
KEY NO.	PART NO.	DESCRIPTION
1	141359	Control Th/ch
2	17720410	Screw Hex Thd Cut 1/4-20x5/8 T
3	-----	Engine Briggs Model No. 287707
4	137352	Muffler Exhaust B&S
13	272293	Gasket Eng 1 313 Id Tin Plated
14	13280324	Nipple Pipe 3/8 Npt X 3"
15	13200300	Elbow Std 90 Degree 3/8-18 Npt
16	11050600	Washer Lock Ext Tooth 3/8
23	156123	Shield Browning
29	137180	Kit Spark Arrestor (Flat Scrn)
31	140280	Tank Fuel Front 2 00
32	140527	Cap Asm Fuel
33	123487X	Clamp Hose Blk
35	17490512	Screw Thdrol 5/16-18 x 3/4
37	137040	Line Fuel
38	-----	Plug Oil Drain (Order From Engine Manufacturer)
40	124028X	Bushing Snap Nyl Blk Fuel Line
44	17490412	Screw Hexwsh Thdrol 1/4-20x3/4
46	19091416	Washer 9/32 X 7/8 X 16 Ga
62	10040500	Washer 5/16
66	127951	Stop Throttle
72	71070512	Screw 5/16-18 x 3/4
78	17490620	Screw Thdrol 3/8-16x1-1/4 TYTT
81	128861	Nut Flange 1/4-20 Starter Nut

NOTE: All component dimensions given in U.S. inches.  
1 inch = 25.4 mm.

# REPAIR PARTS

TRACTOR -- MODEL NUMBER RE145H42A

## MOWER LIFT



# REPAIR PARTS

## TRACTOR - - MODEL NUMBER RE145H42A

### MOWER LIFT

KEY NO.	PART NO.	DESCRIPTION
1	136973	Asm. Inner Wire w/Plunger
2	145117	Asm., Shaft, Lift Handle
3	105767X	Pin, Groove
4	12000002	Ring, E #5133-62
5	19211621	Washer 21/32 x 1 x 21 Ga.
6	120183X	Bearing, Nylon
7	109413X	Grip Handle Bicycle Matte Blk
8	124526X	Button, Plunger
10	122512X	Spring, Compression
11	139865	Link, Lift, Lh
12	139866	Link, Lift, Rh
13	4939M	Spring, Retainer
15	127218	Link, Front
16	73350800	Nut, Jam, Hex 1/2-13 Unc
17	130171	Trunnion
18	73800800	Nut, Lock w/washer 1/2-13 Unc
19	139868	Arm, Suspension, Rear
20	3146R	Spring, Retainer
31	140302	Bearing, Pvt Lift
32	73540600	Nut Crownlock 3/8-24

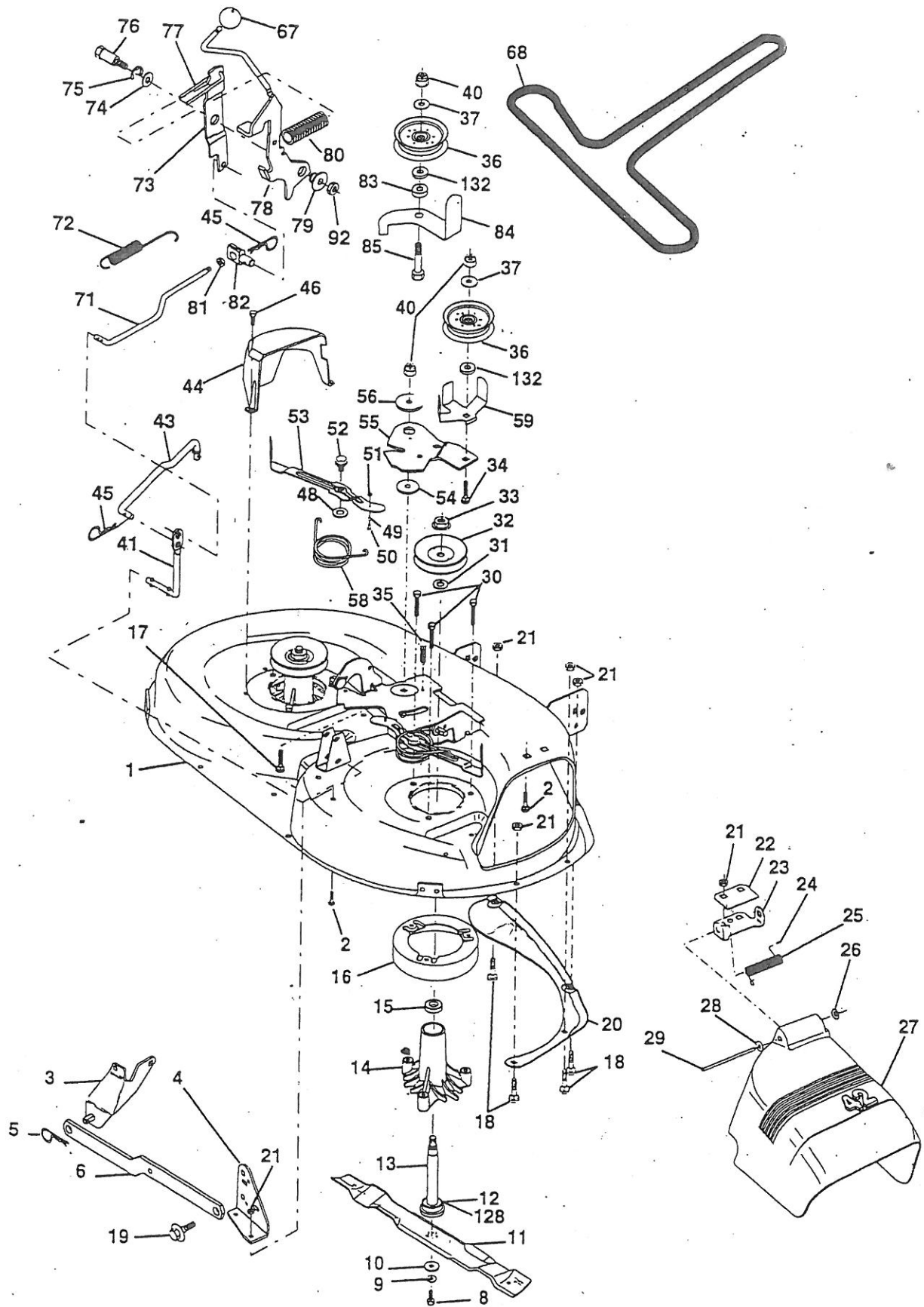
NOTE: All component dimensions given in U.S. inches  
1 inch = 25.4 mm



# REPAIR PARTS

TRACTOR -- MODEL NUMBER RE145H42A

## MOWER DECK



# REPAIR PARTS

TRACTOR -- MODEL NUMBER RE145H42A

## MOWER DECK

KEY NO.	PART NO.	DESCRIPTION	KEY NO.	PART NO.	DESCRIPTION
1	144393	Mowing Housing 42" <i>176031</i>	44	140088	Cover, Mandrel, Lh
2	72140506	Bolt	45	4497H	Retainer Spring 1: Zinc/Cad
3	138017	Asm., Bar, Anti-Sway	46	137729	Screw, Thdrol 1/4-20 x 5/8
4	138440	Asm., Bracket, Anti-Sway Bar	48	133944	Washer Hardened Smaller
5	4939M	Spring, Retainer	49	155066	Roller Asm. Cam for Mech Decks
6	130832	Arm, Suspension, Rear	50	131340	Bolt Shoulder 10-24 Zinc Gr. 5
8	850857	Bolt 3/8-24 x 1.25 Gr. 8	51	69180	Nut Lock #10 - 24 UNC
9	10030600	Washer, Lock	52	139888	Bolt Shoulder 5/16 - 18 Type TT.T.R.
10	140296	Washer, Hardened	53	131845X900	Arm Asm Pad Brake
11	138498	Blade, Mower, Hi Lift	54	133943	Washer, Hardened
12	129895	Bearing, Ball	55	155046	Arm, Idler
13	197645	Asm., Shaft, Mandrel, Vented (includes key no. 12)	56	122052X	Spacer, Retainer
14	128774	Housing, Mandrel, Vented	58	140086	Spring Torsion Brakes 42"
15	110485X	Bearing, Ball, Mandrel	59	141043	Guard, Belt
16	140329	Stripper, Mower	67	106932X	Knob Rd 3/8-16
17	72110610	Bolt, Carriage 3/8-16 x 1-1/4	68	144200	V-Belt, Mower
	72140505	Bolt, Carriage 5/16-18 x 5/8	71	142427	Rod Primary Clutch 38 & 42"
	132827	Bolt, Shoulder	72	131870	Spring Return
20	136888	Baffle Vortex	73	127847	Arm Clutch Secondary
21	73680500	Nut, Crownlock 5/16 - 18 UNC	74	121748X	Washer 25/32 x 1-5/8 x 16 Ga.
22	134753	Stiffener, Bracket	75	12000029	Ring Klip #T5304-75
23	131267	Bracket, Deflector	76	128903	Bolt Shoulder 3/8 - 16 UNC 1.44
24	105304X	Cap, Sleeve	77	127845	Keeper Spring 4.000
25	123713X	Spring, Torsion, Deflector	78	154809	Arm Clutch Primary
26	110452X	Washer, Lock	79	127498	Bushing .747 OD x 794 Lg
27	130968	Shield, Deflector	80	153701	Spring Clutch Mower
28	19111016	Washer 11/32 x 5/8 x 16 Ga.	81	73350600	Nut Hex Jam 3/8 - 16 UNC
29	131491	Rod, Hinge	82	142028	Trunnion Adj. '94
30	138776	Screw Hex Thdrol	83	120958X	Washer Sintered
31	129963	Washer, Spacer	84	156084	Keeper, Belt, Idler
32	153535	Pulley, Mandrel	85	72140618	Bolt, Carriage 3/8-16 x 2-1/4
33	137266	Nut Lock 9/16	92	73800600	Nut Lock Hex w/Ins. 3/8-16 UNC
34	72110614	Bolt	128	153390	Washer Felt
35	133835	Fastener Christmas Tree	132	19132203	Washer 13/32 x 1-3/8 x 3 Ga.
36	131494	Pulley, Idler, Flat	--	130794	Asm. Mandrel (includes key nos. 8-10, 12-15, 31 and 33)
37	19131316	Washer 13/32 x 13/16 Ga.16	--	144783	Deck, Std (Complete)
40	73680600	Nut, Crownlock 3/8 - 16 UNC			
41	133551	Rod Pivot w/Nibs			
43	140083	Rod Clutch Secondary w/Nibs			

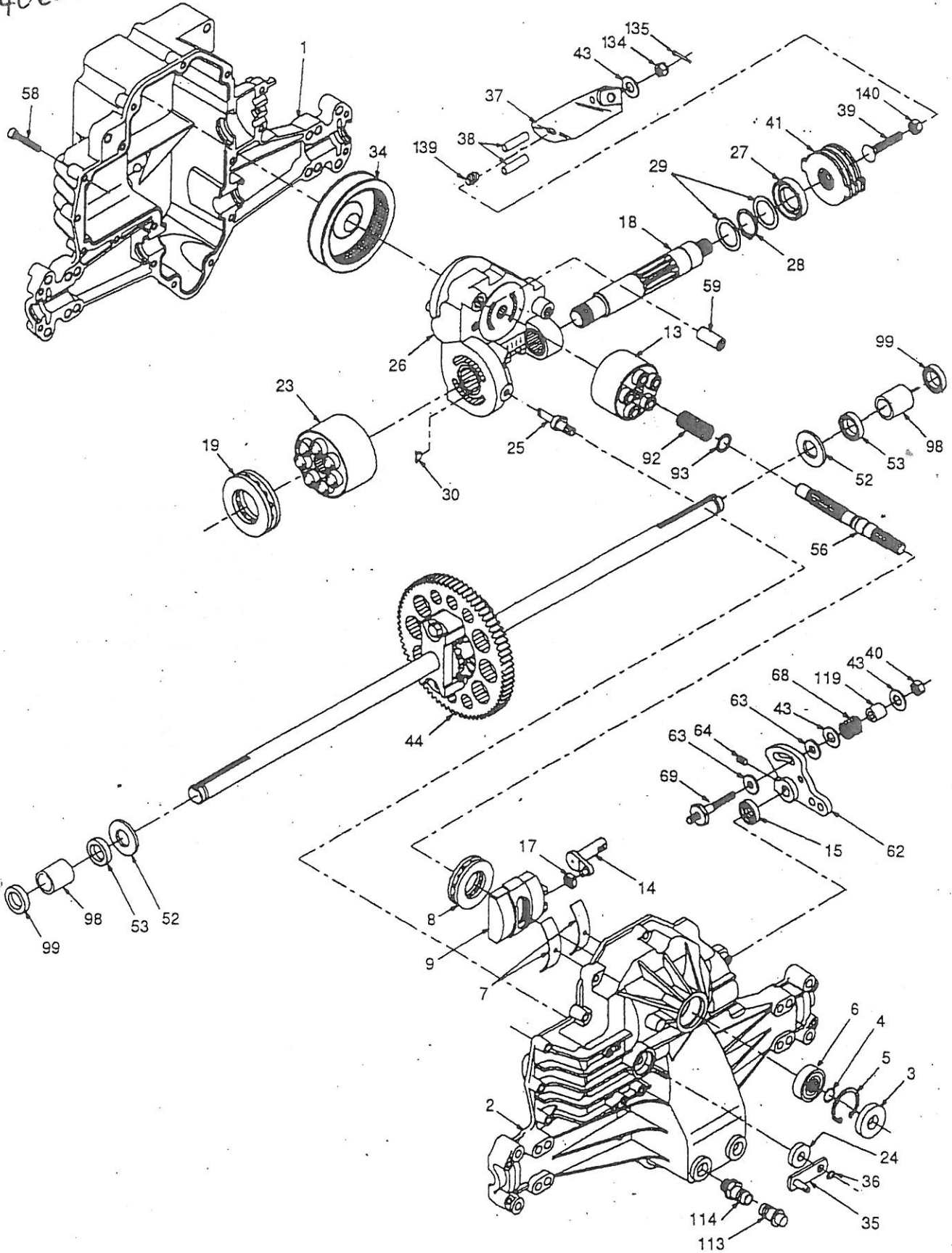
NOTE: All component dimensions given in U.S. inches  
1 inch = 25.4 mm

# REPAIR PARTS

## TRACTOR - - MODEL NUMBER RE145H42A

### TRANSAXLE - HYDRO GEAR MODEL NUMBER 310-0500

140607 - complete



# REPAIR PARTS

## TRACTOR - - MODEL NUMBER RE145H42A

### TRANSAXLE - HYDRO GEAR MODEL NUMBER 310-0500

KEY PART NO. NO.	DESCRIPTION	KEY PART NO. NO.	DESCRIPTION
1 142986	Housing, Lower	40 150778	Locknut, Hex 5/16-24 UNJC
2 142987	Assembly, Upper Housing	41 142958	Brake Rotor/Stator Kit
3 142932	Seal, Lip	43 142884	Washer 7/16 x 7/8 x .060
4 142928	Ring, Wire Retaining	44 142990	Differential Assembly
5 142933	Ring, Retaining	52 142991	Washer 3/4 x 1.5 x .13
6 142934	Bearing, Shaft Ball	53 142961	Seal .75 x 1.25 x .250
7 142935	Bearing, Cradle	56 142963	Shaft, Input
8 150771	Bearing, Thrust 30 x 52 x 13	58 142964	Bolt 1/4-20 x 1.38
9 142937	Washplate, Variable	59 142965	Pin .5 OD x .43 ID x .750
13 142938	Block, Cylinder Assembly	62 142966	Arm, Control
14 142939	Arm, Trunnion	63 142967	Puck, Dampener
15 142940	Seal, Lip	64 142920	Set Screw
17 142941	Guide, Slot	68 142969	Spring
18 150772	Shaft, Motor	69 144610	Stud 5/16-24
19 150773	Bearing, Thrust 42 x 68 x 16	92 142977	Spring, Block
23 142944	Block, Cylinder Assembly	93 142978	Washer, Block Thrust
24 142945	Seal, Lip 10 x 25 x 7	98 142993	Sleeve Bearing
25 142946	Actuator, Bypass	99 142976	Seal, Wiper
150774	Center Section Assembly Kit	113 142917	Cap, Vent Assembly
142948	Seal, Lip 26 x 42 x 8	114 142918	Fitting, O-Ring Assembly
28 142949	Ring, Retaining	119 142980	Spacer
29 142950	Washer 26 x 35 x 1	134 144607	Nut, Castle 5/16-24
30 150787	Nut, Jam	135 144608	Pin, Cotter
34 142951	Oil Filter Element	139 150775	Spring, Compression
35 142952	Arm, Bypass	140 150776	Nut, Hex 5/16-24
36 142953	Ring, Retaining		
37 142954	Arm, Actuating		
38 142955	Pin, Actuating		
39 150777	Bolt 5/16-24 x 1-3/4		

NOTE: All component dimensions given in U.S. inches  
1 inch = 25.4 mm